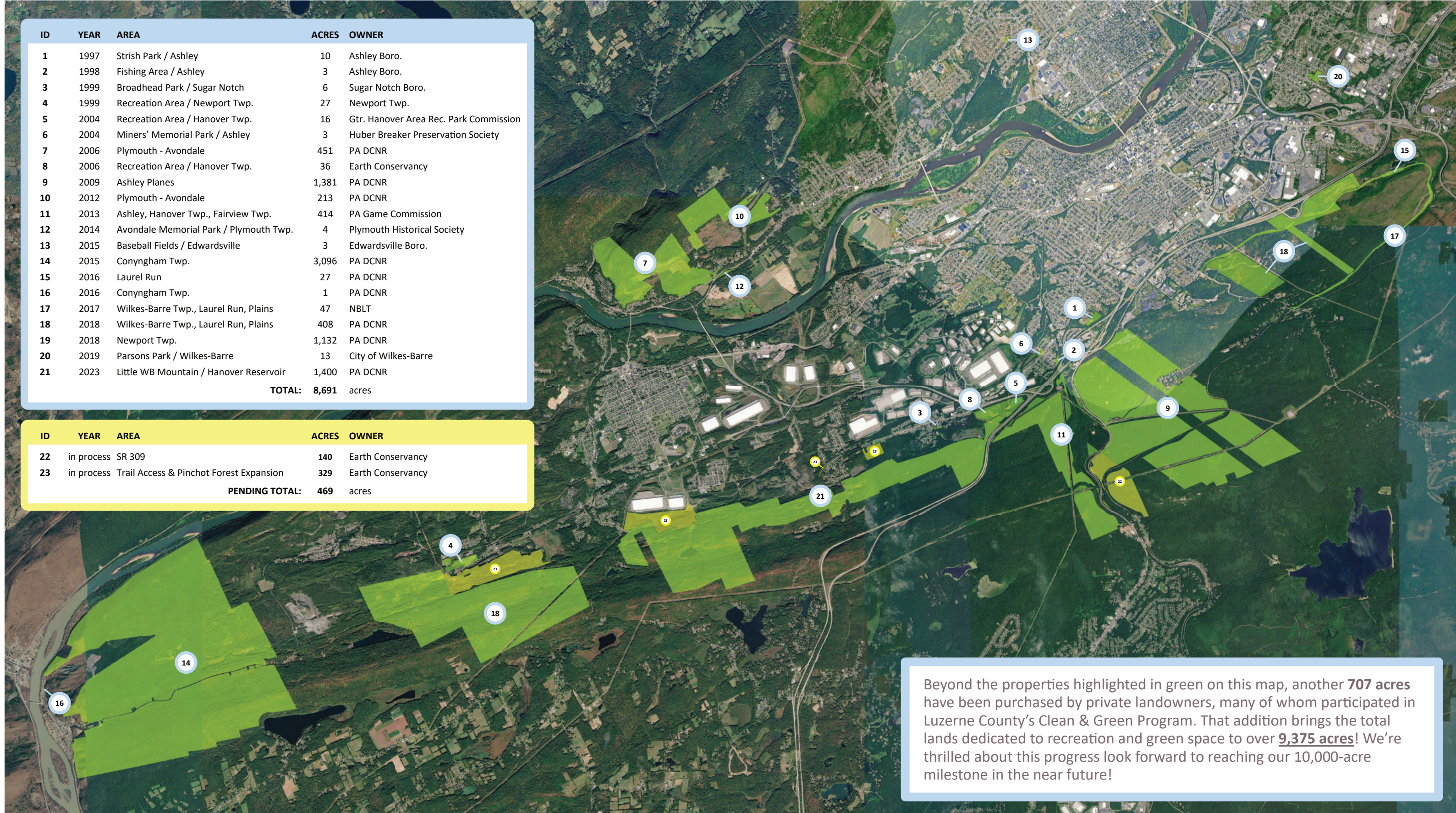


ID	YEAR	AREA	ACRES	OWNER
1	1997	Strish Park / Ashley	10	Ashley Boro.
2	1998	Fishing Area / Ashley	3	Ashley Boro.
3	1999	Broadhead Park / Sugar Notch	6	Sugar Notch Boro.
4	1999	Recreation Area / Newport Twp.	27	Newport Twp.
5	2004	Recreation Area / Hanover Twp.	16	Gtr. Hanover Area Rec. Park Commission
6	2004	Miners' Memorial Park / Ashley	3	Huber Breaker Preservation Society
7	2006	Plymouth - Avondale	451	PA DCNR
8	2006	Recreation Area / Hanover Twp.	36	Earth Conservancy
9	2009	Ashley Planes	1,381	PA DCNR
10	2012	Plymouth - Avondale	213	PA DCNR
11	2013	Ashley, Hanover Twp., Fairview Twp.	414	PA Game Commission
12	2014	Avondale Memorial Park / Plymouth Twp.	4	Plymouth Historical Society
13	2015	Baseball Fields / Edwardsville	3	Edwardsville Boro.
14	2015	Conyngham Twp.	3,096	PA DCNR
15	2016	Laurel Run	27	PA DCNR
16	2016	Conyngham Twp.	1	PA DCNR
17	2017	Wilkes-Barre Twp., Laurel Run, Plains	47	NBLT
18	2018	Wilkes-Barre Twp., Laurel Run, Plains	408	PA DCNR
19	2018	Newport Twp.	1,132	PA DCNR
20	2019	Parsons Park / Wilkes-Barre	13	City of Wilkes-Barre
21	2023	Little WB Mountain / Hanover Reservoir	1,400	PA DCNR
<b>TOTAL:</b>			<b>8,691</b>	acres

ID	YEAR	AREA	ACRES	OWNER
22	in process	SR 309	140	Earth Conservancy
23	in process	Trail Access & Pinchot Forest Expansion	329	Earth Conservancy
<b>PENDING TOTAL:</b>			<b>469</b>	acres



Beyond the properties highlighted in green on this map, another **707 acres** have been purchased by private landowners, many of whom participated in Luzerne County's Clean & Green Program. That addition brings the total lands dedicated to recreation and green space to over **9,375 acres!** We're thrilled about this progress look forward to reaching our 10,000-acre milestone in the near future!