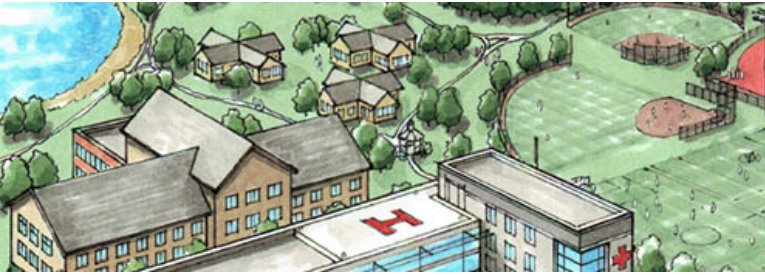




EARTH CONSERVANCY – HANOVER LOT 7A

PUBLIC PRESENTATION AND INPUT SESSION

October 18, 2022



AGENDA

1. Welcome and Introductions
2. Site Location / Overview
3. Study / Master Plan Goals
4. Community Survey Results
5. Conceptual Use Sketches / Voting
6. General Discussion / Questions

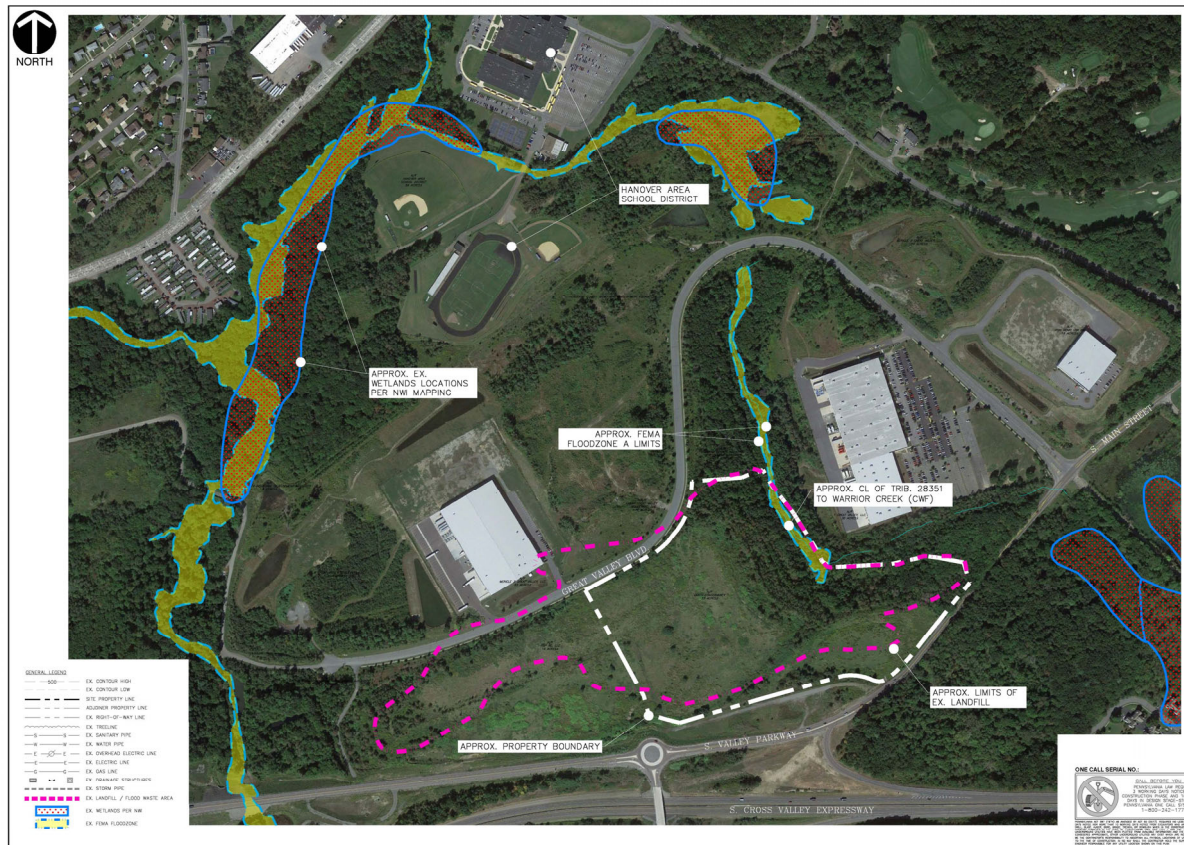


K&W

DESIGNING ENVIRONMENTS

THAT TRANSFORM COMMUNITIES

SITE LOCATION / OVERVIEW



GENERAL LEGEND

---	EX. CONTOUR HIGH
---	EX. CONTOUR LOW
---	EX. PROPERTY LINE
---	ALLEGED PROPERTY LINE
---	EX. RIGHT-OF-WAY LINE
---	EX. FENCE
---	EX. SANITARY PIPE
---	EX. WATER PIPE
---	EX. DRAINAGE EGRESS LINE
---	EX. ELECTRIC LINE
---	EX. GAS LINE
---	EX. SEWER
---	EX. TELEPHONE
---	EX. LANDFILL / FLOOD WHITE AREA
---	EX. WETLAND PER NW
---	EX. FEMA FLOODZONE

DESIGN BUILD
K&W
CONSERVANCY

Location: HANOVER CROSSINGS
HANOVER TOWNSHIP
LUZERNE COUNTY, PA

Project Name: MASTER SITE DEVELOPMENT PLAN
PROPOSED PUBLIC PARK PROJECT
Drawing Title: LOCATION MAP

Scale: 1" = 100'

ONE CALL SERIAL NO. [Symbol]

REVISION RECORD	NO.	DATE	DESCRIPTION

Drawn By: JAL | Checked By: WCL
Date: 10/26/2021
Project No.: 021019
Drawing No.: C-002
Sheet # of 2



K&W
DESIGNING ENVIRONMENTS
THAT TRANSFORM COMMUNITIES

STUDY / MASTER PLAN GOALS

1. Evaluate site conditions
2. Engage public / stakeholders (needs / wants, potential uses, connectivity to other facilities)
3. Prepare Concept Plans / Preliminary Construction Cost Estimates
4. Identify Revenue Sources and O&M Costs (Pro Forma)
5. Evaluate Ownership / Management Structure
6. Evaluate Funding Opportunities
7. Identify Desired Use, Costs

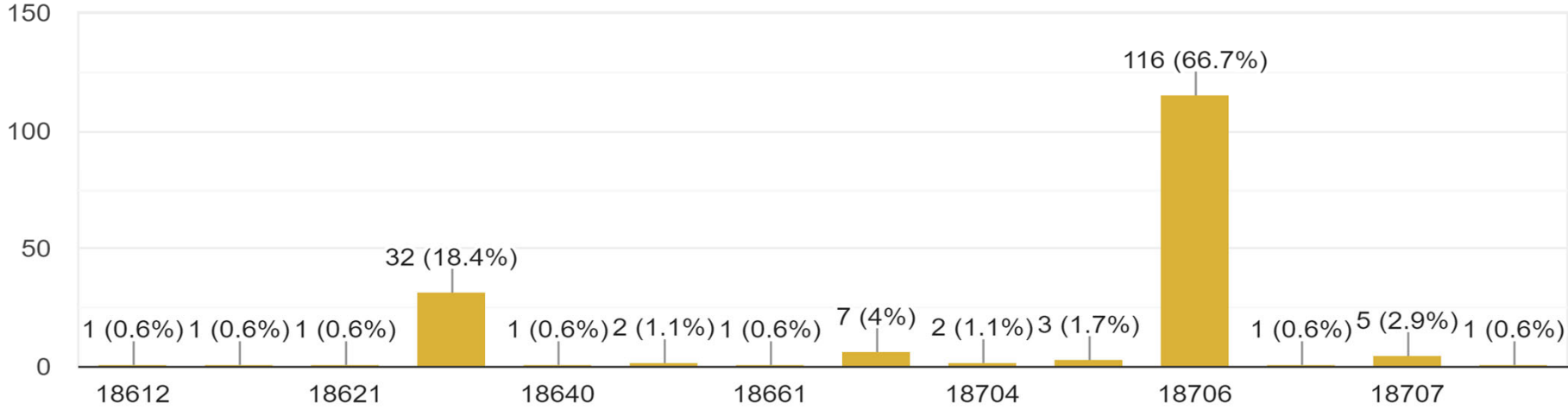


K&W
DESIGNING ENVIRONMENTS
THAT TRANSFORM COMMUNITIES

COMMUNITY SURVEY RESULTS

Your Residency Zip Code

174 responses





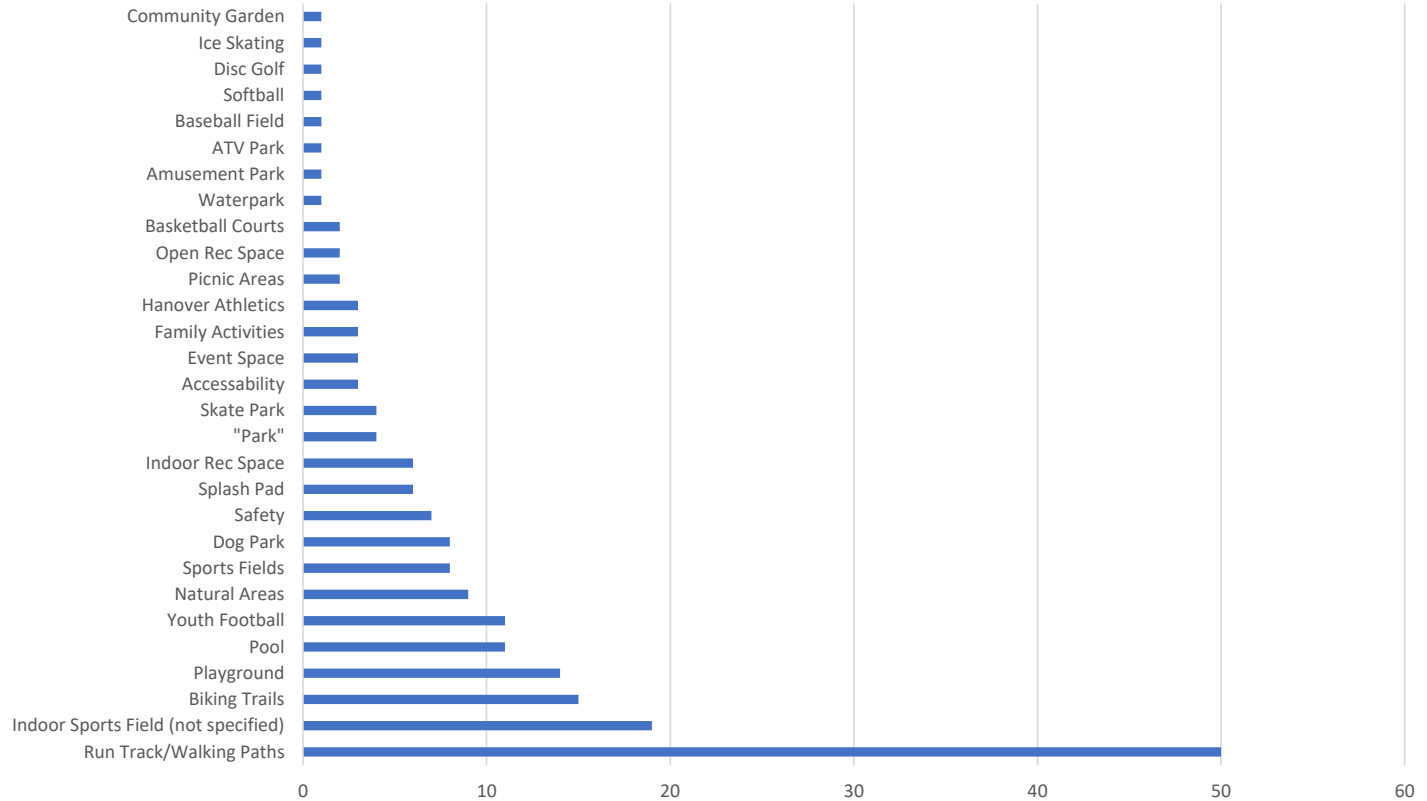
K&W

DESIGNING ENVIRONMENTS

THAT TRANSFORM COMMUNITIES

COMMUNITY SURVEY RESULTS

of Mentions





K&W
DESIGNING ENVIRONMENTS
 THAT TRANSFORM COMMUNITIES

CONCEPTUAL USE SKETCHES

K&W
 DESIGNING ENVIRONMENTS
 2201 North Front Street, Suite 200
 Harrisburg, PA 17110
 P: 717.633.2933
 www.kandwcongress.com



GRAPHIC SCALE
 0 50 100 150
 SCALE: 1" = 80'
 This rendering is strictly a Conceptual Vision Plan. Final design will be dependent on site survey, programming, civil engineering, and regulatory requirements.

- SKETCH PLAN A NOTES**
- Three (3) Outdoor Grass Multi-Use Athletic Fields (225' X 360')
 - Sensory Playground
 - 1.0 Mile Outdoor Walking / Fitness Trails
 - Central Parking Area
 - **FUTURE PHASE** - Indoor Facility: 102,000 SF (Two Baseball Infields, 200 M Indoor Track, Three Play Courts, Community Rooms, Restrooms, Offices)

Conceptual Site Plan A
Hanover Lot 7A Master Plan
 Hanover Township, Luzerne County, PA October 18, 2022



K&W
DESIGNING ENVIRONMENTS
 THAT TRANSFORM COMMUNITIES

CONCEPTUAL USE SKETCHES

K&W
 DESIGNING ENVIRONMENTS
 2201 North Front Street, Suite 200
 Harrisburg, PA 17110
 P: 717.636.2825
 www.kandwengineers.com



GRAPHIC SCALE
 SCALE: 1" = 80'
 This rendering is strictly a
 Conceptual Vision Plan. Final design
 will be dependent on site survey,
 programming, civil engineering, and
 regulatory requirements.

- SKETCH PLAN B NOTES**
- Four Outdoor Natural Grass Multi-Use Athletic Fields (200' x 360', 180' x 330 (2), 225' x 360')
 - 225' x 360' Synthetic Turf Multi-Use Field
 - Restroom / Concessions / Storage Building
 - ADA Accessible Playground
 - 1.7 Mile Outdoor Walking / Fitness Trails
 - Dispersed Parking Areas

Conceptual Vision Plan B
Hanover Lot 7A Master Plan
 Hanover Township, Luzerne County, PA October 18, 2022



K&W
DESIGNING ENVIRONMENTS
 THAT TRANSFORM COMMUNITIES

CONCEPTUAL USE SKETCHES

K&W
 DESIGNING ENVIRONMENTS
 2201 North Front Street, Suite 200
 Harrisburg, PA 17110
 P: 717.636.2825
 www.kandwengineers.com



GRAPHIC SCALE
 SCALE: 1" = 80'
 This rendering is strictly a Conceptual Vision Plan. Final design will be dependent on site survey, programming, civil engineering, and regulatory requirements.

- SKETCH PLAN C NOTES**
- Two Outdoor Natural Grass Multi-Use Athletic Fields (200' X 360', 225' X 360')
 - 1.7 Mile Outdoor Walking / Fitness Trails
 - ADA Accessible Playground
 - Two Picnic Pavilions
 - Amphitheater / Bandshell
 - Restroom / Concessions / Storage Building

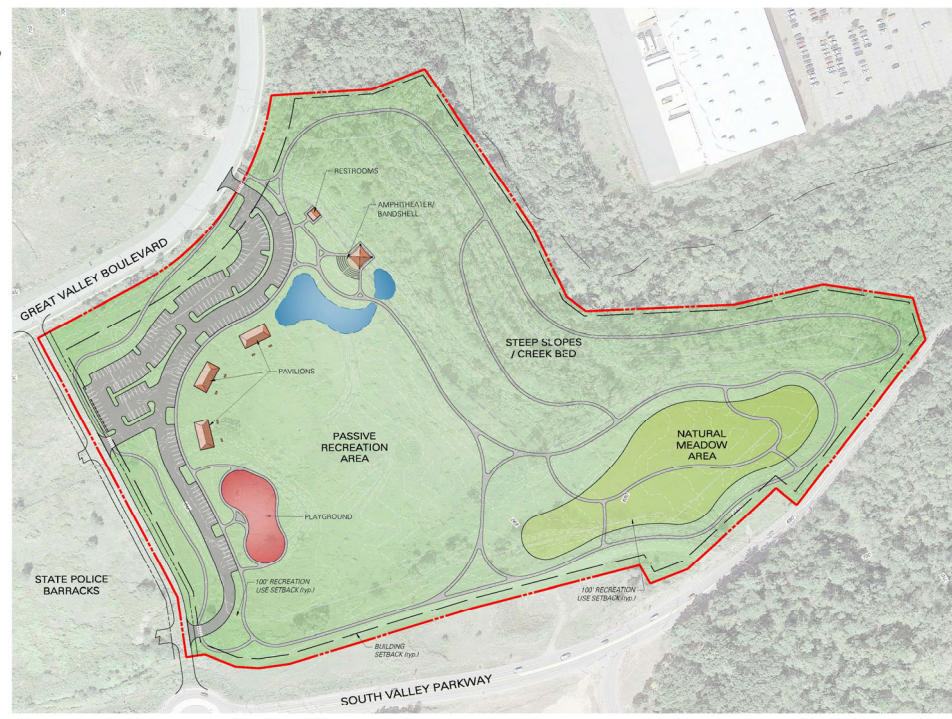
Conceptual Vision Plan C
Hanover Lot 7A Master Plan
 Hanover Township, Luzerne County, PA October 18, 2022



K&W
DESIGNING ENVIRONMENTS
 THAT TRANSFORM COMMUNITIES

CONCEPTUAL USE SKETCHES

K&W
 DESIGNING ENVIRONMENTS
 2201 North Front Street, Suite 200
 Harrisburg, PA 17110
 P: 717.636.2825
 www.kandwengineers.com



GRAPHIC SCALE
 SCALE: 1" = 80'
 This rendering is strictly a Conceptual Vision Plan. Final design will be dependent on site survey, programming, civil engineering, and regulatory requirements.

- SKETCH PLAN D NOTES**
- Large Grass Area for Passive Recreation
 - Natural Meadow Area
 - 2 Mile Outdoor Walking / Fitness Trails
 - ADA Accessible Playground
 - Three Picnic Pavilions
 - Amphitheater / Bandsshell
 - Restroom Building

Conceptual Vision Plan D
Hanover Lot 7A Master Plan
 Hanover Township, Luzerne County, PA October 18, 2022



K&W
DESIGNING ENVIRONMENTS
THAT TRANSFORM COMMUNITIES

VOTE!!!





K&W
DESIGNING ENVIRONMENTS
THAT TRANSFORM COMMUNITIES

WRAP UP

- NEXT STEPS
- GENERAL DISCUSSION / QUESTIONS

