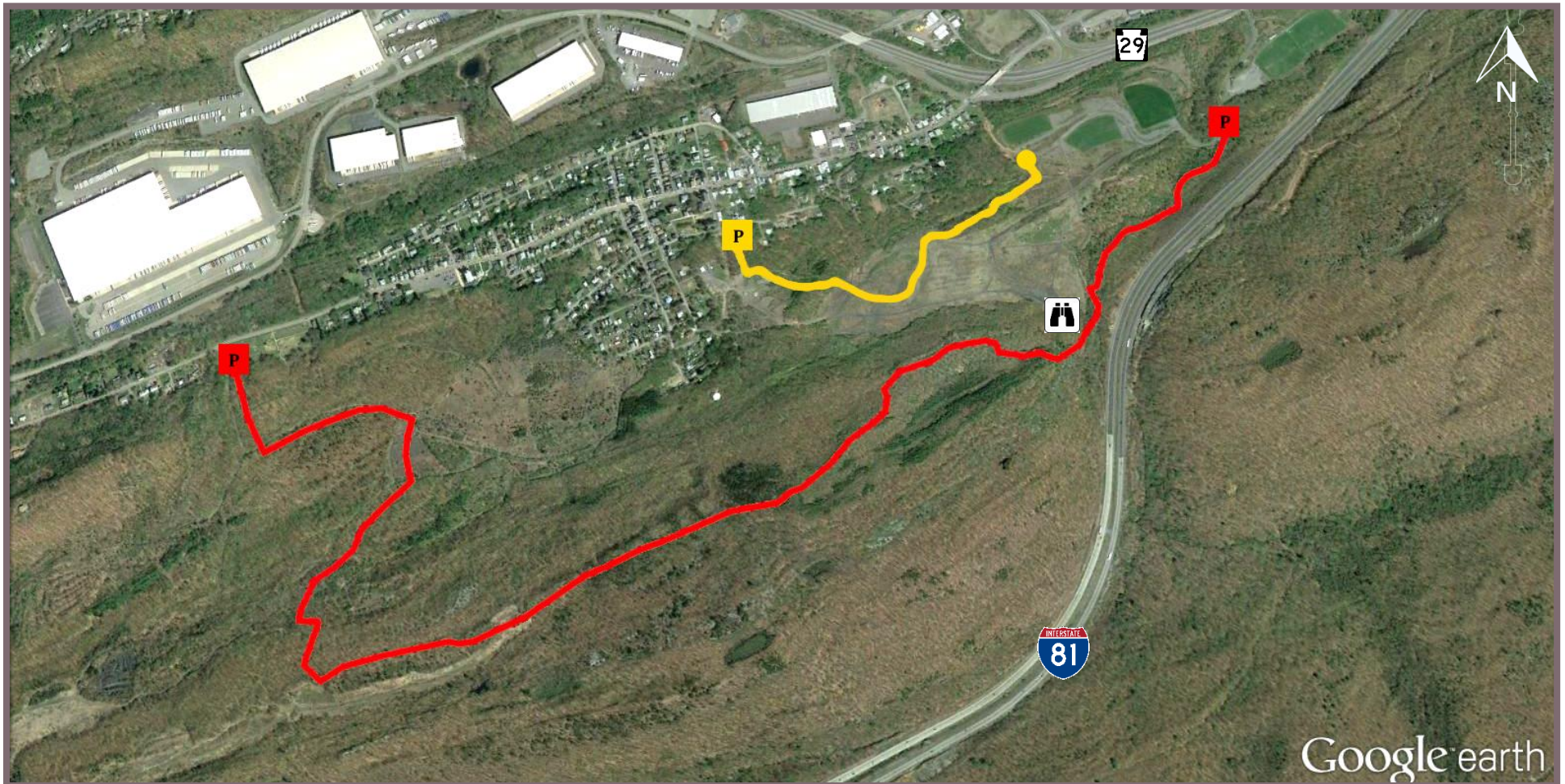


# Sugar Notch Trails



**Ridgetop Trail** (3.06 miles): The western trailhead is off Main Street in Sugar Notch, 1.4 miles east of Exit 1, SR 29. The eastern trailhead is within the Greater Hanover Area Recreation Park on Earth Conservancy Drive, 0.65 miles east off Exit 1, SR 29, on Main Street in Ashley. Parking is available at both trailheads (note: the eastern trailhead is only open spring through fall).

**Jacqueline Munro Trail** (0.64 miles): The western trailhead begins at the Sugar Notch Playground, off of Broadhead Avenue at Chestnut Street in Sugar Notch. Streetside parking is available. The eastern access point is inside the Greater Hanover Area Recreation Park.

**Please Note:** Trails are open from dawn until dusk. Respect private property by staying on designated paths. Remember to leave no trace and pack out anything brought in. A topographic version of this map is available at [www.earthconservancy.org](http://www.earthconservancy.org).



**Earth Conservancy**  
101 South Main Street | Ashley, PA 18706  
570.823.3445 | [www.earthconservancy.org](http://www.earthconservancy.org)