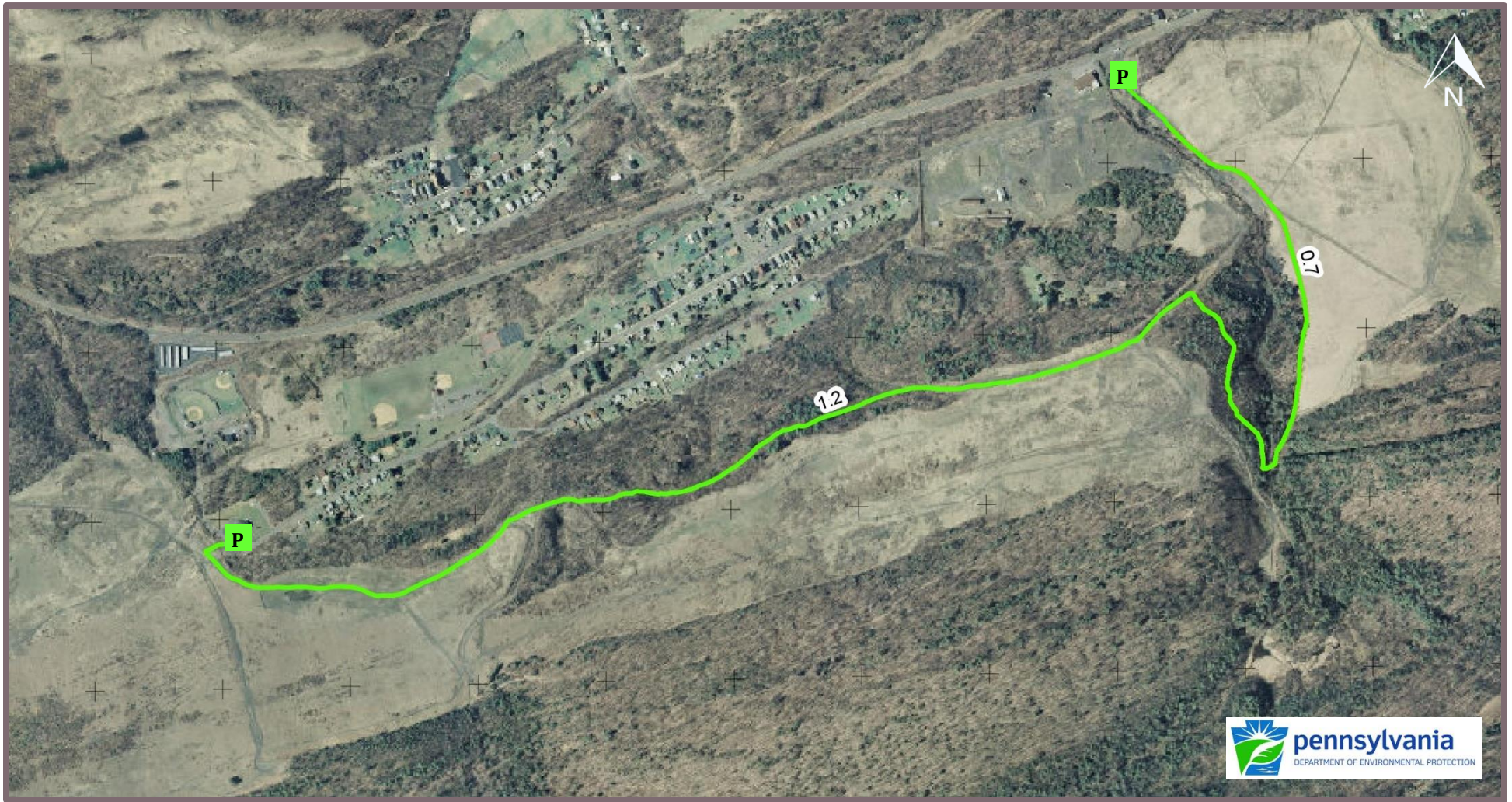



Penobscot Ridge Mountain Bike Trail



 **Penobscot Ridge Mountain Bike Trail (1.2 miles):** The western trailhead is off of West Main Street in Wanamie. From SR 29, Exit 2, turn onto South Main Street, heading towards Alden. Follow approximately 4 miles, continuing onto Middle Road and then East Kirmar Avenue. Turn left onto West Kirmar Avenue. Follow another 2 miles and turn left onto West Main Street. Parking is available.

Please Note: Trails are open from dawn until dusk. Respect private property by staying on designated paths. Remember to leave no trace and pack out anything brought in. A topographic version of the original trail map is available at www.earthconservancy.org.



101 South Main Street | Ashley, PA 18706
570.823.3445 | www.earthconservancy.org