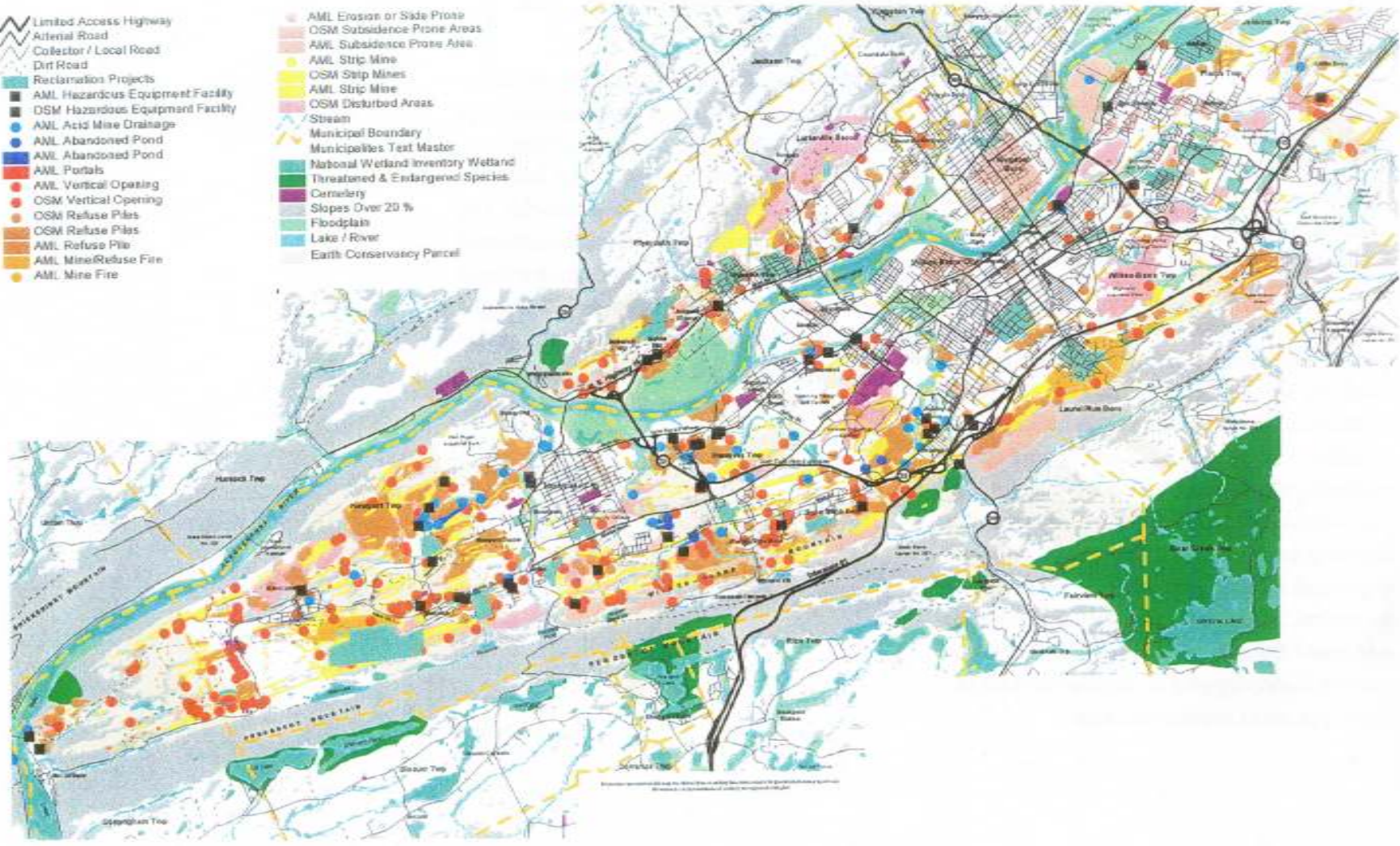


- ⚡ Limited Access Highway
- ⚡ Arterial Road
- ⚡ Collector / Local Road
- ⚡ Dirt Road
- 🟩 Reclamation Projects
- 🟩 AML Hazardous Equipment Facility
- 🟩 OSM Hazardous Equipment Facility
- 🟩 AML Acid Mine Drainage
- 🟩 AML Abandoned Pond
- 🟩 AML Abandoned Pond
- 🟩 AML Portals
- 🟩 AML Vertical Opening
- 🟩 OSM Vertical Opening
- 🟩 OSM Refuse Piles
- 🟩 OSM Refuse Piles
- 🟩 AML Refuse Pile
- 🟩 AML Mine/Refuse Fire
- 🟩 AML Mine Fire

- 🟩 AML Erosion or Slide Prone
- 🟩 OSM Subsidence Prone Area
- 🟩 AML Subsidence Prone Area
- 🟩 AML Strip Mine
- 🟩 OSM Strip Mines
- 🟩 AML Strip Mine
- 🟩 OSM Disturbed Areas
- 🟩 Stream
- 🟩 Municipal Boundary
- 🟩 Municipalities Text Master
- 🟩 National Wetland Inventory Wetland
- 🟩 Threatened & Endangered Species
- 🟩 Cemetery
- 🟩 Slopes Over 20 %
- 🟩 Floodplain
- 🟩 Lake / River
- 🟩 Earth Conservancy Parcel



0 2 Miles

Wyoming Valley Open Space Constraints